

**ROUGH
TERRAIN
CRANE**

RK450

SPECIFICATIONS

Max. Lifting capacity: 45.0 metric tons x 3.0 meters
Max. Boom Length: 39.0 meters
Max. Total Length (boom + jib): 54.0 meters

KOBELCO
◆ KOBELCO STEEL, LTD.

Main Boom Lifting Capacities with Outriggers

Operating radius in meters	With outriggers 7.2m extended—360° working area					With outriggers in 5.4m position—over the side					With outriggers in 4.0m position—over the side					With outriggers in 2.57m position over the side		
	Boom length in meters					Boom length in meters					Boom length in meters					Boom length in meters		
	10.2	17.4	24.6	31.8	39.0	10.2	17.4	24.6	31.8	39.0	10.2	17.4	24.6	31.8	39.0	10.2	17.4	24.6
3.0	45.00	28.00	20.00			45.00	28.00	20.00			40.00	28.00	20.00			15.00	12.00	11.00
3.5	40.80	28.00	20.00	13.00		40.80	28.00	20.00	13.00		33.20	28.00	20.00	13.00		15.00	12.00	11.00
3.75	38.90	28.00	20.00	13.00		38.90	28.00	20.00	13.00		30.00	28.00	20.00	13.00		15.00	12.00	11.00
4.0	37.00	28.00	20.00	13.00		37.00	28.00	20.00	13.00		27.00	25.30	20.00	13.00		13.60	12.00	11.00
4.5	33.50	28.00	20.00	13.00	7.50	33.50	28.00	20.00	13.00	7.50	21.60	21.15	20.00	13.00	7.50	11.00	10.50	9.80
5.0	30.20	28.00	20.00	13.00	7.50	28.20	24.90	20.00	13.00	7.50	17.80	17.30	16.70	13.00	7.50	9.10	8.70	8.65
5.5	27.50	25.70	20.00	13.00	7.50	24.20	22.50	20.00	13.00	7.50	15.00	14.40	14.10	13.00	7.50	7.65	7.30	7.20
6.0	25.00	23.60	20.00	13.00	7.50	20.80	20.50	18.25	13.00	7.50	12.80	12.20	12.05	13.00	7.50	6.45	6.20	6.10
6.5	22.70	21.80	18.50	13.00	7.50	18.00	17.40	16.65	13.00	7.50	11.10	10.60	10.35	11.50	7.50	5.50	5.25	5.15
7.0	20.70	20.20	17.10	13.00	7.50	15.40	15.00	15.00	13.00	7.50	9.65	9.30	9.00	10.20	7.50	4.70	4.50	4.40
7.2	11.50	19.60	16.60	13.00	7.50	11.50	14.25	14.20	13.00	7.50	9.15	8.80	8.50	9.70	7.50	4.40	4.20	4.10
7.5		18.70	16.00	13.00	7.50		13.30	13.10	13.00	7.50		8.10	7.85	9.00	7.50		3.85	3.75
8.0		17.40	15.00	12.35	7.50		11.70	11.50	12.00	7.50		7.15	6.90	8.00	7.50		3.30	3.20
8.5		16.20	14.10	11.70	7.50		10.40	10.20	11.00	7.50		6.30	6.10	7.10	7.05		2.80	2.65
9.0		15.00	13.30	11.15	7.50		9.30	9.10	10.00	7.50		5.60	5.40	6.40	6.60		2.35	2.20
9.5		13.80	12.60	10.60	7.50		8.40	8.15	9.10	7.50		5.00	4.80	5.75	6.20		1.90	1.75
10.0		12.45	12.00	10.10	7.50		7.55	7.30	8.30	7.50		4.45	4.25	5.20	5.70		1.50	1.40
11.0		10.30	10.15	9.20	7.00		6.20	6.00	6.90	6.75		3.50	3.25	4.25	4.75		0.85	0.70
12.0		8.65	8.50	8.40	6.50		5.15	4.90	5.80	6.05		2.70	2.45	3.45	4.00			
13.0		7.35	7.20	7.70	6.05		4.25	4.00	4.90	5.40		2.00	1.80	2.80	3.35			
14.0		6.30	6.15	7.00	5.65		3.45	3.25	4.20	4.75		1.40	1.25	2.20	2.80			
14.4		4.00	5.75	6.60	5.50		3.20	3.00	3.95	4.50		1.20	1.05	2.00	2.60			
15.0			5.30	6.10	5.25			2.60	3.60	4.15			0.75	1.70	2.30			
16.0			4.55	5.40	4.90			2.05	3.05	3.60				1.25	1.85			
17.0			3.95	4.75	4.55			1.60	2.55	3.15				0.90	1.50			
18.0			3.40	4.20	4.20			1.15	2.10	2.75				0.60	1.15			
19.0			2.90	3.70	3.90			0.80	1.70	2.40					0.85			
20.0			2.40	3.30	3.60				1.35	2.05					0.60			
21.0			2.00	2.90	3.30				1.05	1.75								
21.6			1.80	2.65	3.15				0.90	1.55								
22.0				2.50	3.00				0.80	1.45								
23.0				2.20	2.70				0.55	1.20								
24.0				1.90	2.40					0.95								
25.0				1.60	2.15					0.75								
26.0				1.35	1.90					0.55								
27.0				1.10	1.65													
28.0				0.90	1.45													
28.8				0.80	1.30													
29.0					1.25													
30.0					1.05													
31.0					0.90													
32.0					0.75													
33.0					0.60													
Min. angle	0°	0°	0°	0°	0°	0°	0°	28°	36°	43°	0°	0°	45°	50°	55°	0°	39°	57°

*H-lyhpe only

Main Boom Lifting Capacities without Outriggers

Operating radius in meters	Stationary						Pick & Carry (under 2km/h)					
	360° working area			Over the front			360° working area			Over the front		
	Boom length in meters			Boom length in meters			Boom length in meters			Boom length in meters		
	10.2	17.4	24.6	10.2	17.4	24.6	10.2	17.4	24.6	10.2	17.4	24.6
3.0	12.50	10.00	5.50	20.00	15.00	10.50	8.00	6.50	4.50	14.50	10.50	8.00
3.5	9.10	8.00	5.50	20.00	15.00	10.50	8.00	6.50	4.50	14.50	10.50	8.00
3.75	8.05	7.20	5.50	20.00	15.00	10.50	8.00	6.50	4.50	14.50	10.50	8.00
4.0	7.20	6.50	5.50	20.00	15.00	10.50	7.20	6.50	4.50	14.50	10.50	8.00
4.5	5.70	5.25	5.50	17.40	15.00	10.50	5.70	5.25	4.50	12.50	10.50	8.00
5.0	4.50	4.20	4.20	15.10	15.00	10.50	4.50	4.20	4.20	11.00	10.50	8.00
5.5	3.60	3.25	3.25	13.66	13.70	10.50	3.60	3.25	3.25	9.90	10.50	8.00
6.0	2.80	2.55	2.45	12.20	12.40	10.50	2.80	2.55	2.45	8.95	9.50	8.00
6.5	2.20	1.95	1.85	11.20	11.30	9.50	2.20	1.95	1.85	8.25	8.60	8.00
7.0	1.70	1.45	1.35	10.30	10.20	8.70	1.70	1.45	1.35	7.60	7.80	7.25
7.2	1.50	1.25	1.15	10.00	9.75	8.35	1.50	1.25	1.15	7.35	7.45	7.00
7.5		1.05	0.95		9.10	7.90		1.05	0.95		7.00	6.65
8.0		0.70	0.65		8.10	7.20		0.70	0.65		6.35	6.05
8.5					7.20	6.55					5.80	5.50
9.0					6.40	5.90					5.25	5.00
9.5					5.75	5.40					4.75	4.55
10.0					5.20	4.80					4.30	4.10
11.0					4.30	3.90					3.60	3.30
12.0					3.60	3.20					3.00	2.75
13.0					3.00	2.65					2.40	2.25
14.0					2.40	2.15					1.90	1.80
14.4					2.20	1.95					1.70	1.65
15.0						1.70						1.40
16.0						1.30						1.05
17.0						0.90						0.75
Min. angle	0°	54°	65°	0°	0°	37°	0°	54°	65°	0°	0°	37°

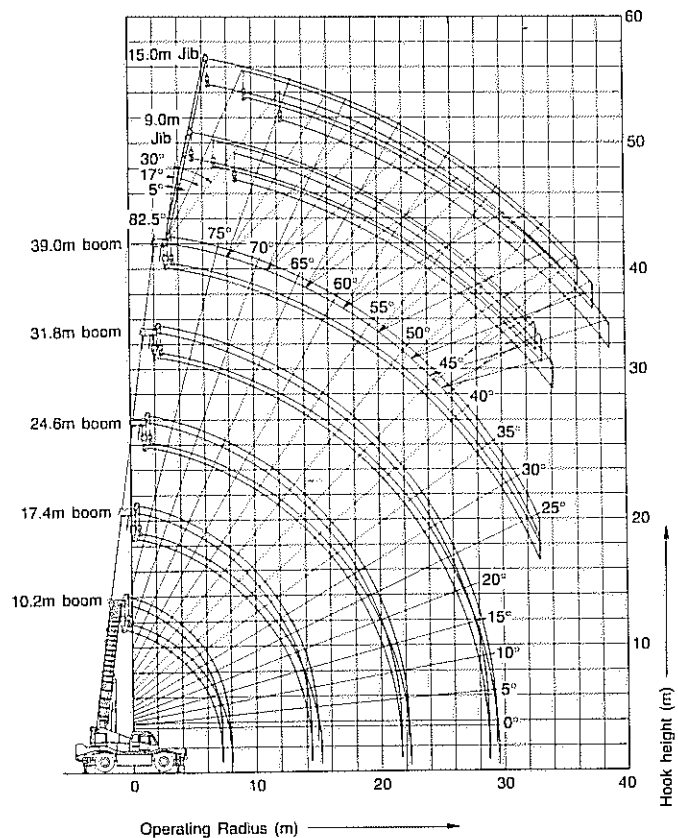
Standard Jib Lifting Capacities with Outriggers

Main boom angle	With outriggers in 7.2m position—360° working area					
	9.0 m jib			15.0 m jib		
	Offset angle			Offset angle		
	5°	17°	30°	5°	17°	30°
82	3.50	2.80	2.20	2.40	1.60	1.10
80	3.50	2.80	2.20	2.40	1.60	1.10
78	3.50	2.80	2.20	2.40	1.60	1.10
77	3.50	2.80	2.20	2.32	1.60	1.10
76	3.50	2.80	2.20	2.23	1.60	1.10
75	3.50	2.80	2.20	2.15	1.60	1.10
74	3.32	2.68	2.11	2.06	1.53	1.08
72	3.00	2.45	1.96	1.91	1.41	1.04
70	2.75	2.24	1.82	1.76	1.32	1.00
68	2.52	2.05	1.71	1.63	1.25	0.96
66	2.30	1.91	1.62	1.51	1.18	0.92
64	2.12	1.80	1.53	1.41	1.13	0.89
62	1.96	1.69	1.46	1.33	1.08	0.86
60	1.85	1.60	1.39	1.25	1.04	0.84
58	1.74	1.50	1.32	1.19	0.99	0.81
57	1.70	1.45	1.29	1.16	0.97	0.79
56	1.62	1.41	1.26	1.14	0.95	0.78
55	1.49	1.37	1.23	1.11	0.93	0.76
54	1.35	1.27	1.20	1.06	0.90	0.75
53	1.22	1.14	1.07	0.95	0.88	0.74
52	1.10	1.03	0.96	0.84	0.79	0.71
51	0.99	0.92	0.86	0.74	0.70	0.63
50	0.88	0.81	0.77	0.66	0.61	0.55
48	0.67	0.63	0.60	0.48	0.44	0.41
47	0.58	0.53	0.52	0.41	0.38	0.35
46	0.50	0.45	0.43	0.35		
45	0.42	0.37	0.35			
44	0.34					
Min. angle	44°	45°	45°	46°	47°	47°

Main boom angle	With outriggers in 5.4m position—over the side					
	9.0 m jib			15.0 m jib		
	Offset angle			Offset angle		
	5°	17°	30°	5°	17°	30°
82	3.50	2.80	2.20	2.40	1.60	1.10
80	3.50	2.80	2.20	2.40	1.60	1.10
78	3.50	2.80	2.20	2.40	1.60	1.10
77	3.50	2.80	2.20	2.32	1.60	1.10
76	3.50	2.80	2.20	2.23	1.60	1.10
75	3.50	2.80	2.20	2.15	1.60	1.10
74	3.32	2.68	2.11	2.06	1.53	1.08
72	3.00	2.45	1.96	1.91	1.41	1.04
70	2.75	2.24	1.82	1.76	1.32	1.00
68	2.52	2.05	1.71	1.63	1.25	0.96
67	2.26	1.98	1.66	1.57	1.22	0.94
66	2.03	1.80	1.62	1.51	1.18	0.92
65	1.80	1.64	1.58	1.46	1.16	0.90
64	1.60	1.48	1.40	1.31	1.13	0.89
63	1.41	1.31	1.23	1.13	0.97	0.88
62	1.24	1.15	1.07	0.98	0.83	0.74
60	0.91	0.85	0.77	0.72	0.58	0.52
58	0.64	0.57	0.50	0.47	0.38	0.33
57	0.50	0.44	0.39	0.36		
56	0.40	0.31				
Min. angle	56°	56°	57°	57°	58°	58°

Main boom angle	With outriggers in 4.0m position—over the side					
	9.0 m jib			15.0 m jib		
	Offset angle			Offset angle		
	5°	17°	30°	5°	17°	30°
82	3.50	2.80	2.20	2.40	1.60	1.10
80	3.50	2.80	2.20	2.40	1.60	1.10
78	3.50	2.80	2.20	2.40	1.60	1.10
77	3.50	2.80	2.20	2.32	1.60	1.10
76	3.50	2.80	2.20	2.23	1.60	1.10
75	3.50	2.80	2.20	2.15	1.60	1.10
74	2.84	2.40	2.11	2.06	1.53	1.08
73	2.40	2.09	1.80	1.98	1.46	1.06
72	2.02	1.80	1.53	1.76	1.41	1.04
71	1.76	1.53	1.29	1.46	1.15	1.02
70	1.42	1.28	1.08	1.20	0.96	0.88
69	1.17	1.04	0.89	0.96	0.79	0.73
68	0.94	0.82	0.73	0.75	0.62	0.58
67	0.74	0.62	0.56	0.57	0.46	0.43
66	0.56	0.44	0.41	0.40	0.32	0.30
65	0.40					
Min. angle	65°	66°	66°	66°	66°	66°

Working Ranges



Ratings inside the bold lines are governed by the strength of the boom or other structural components.

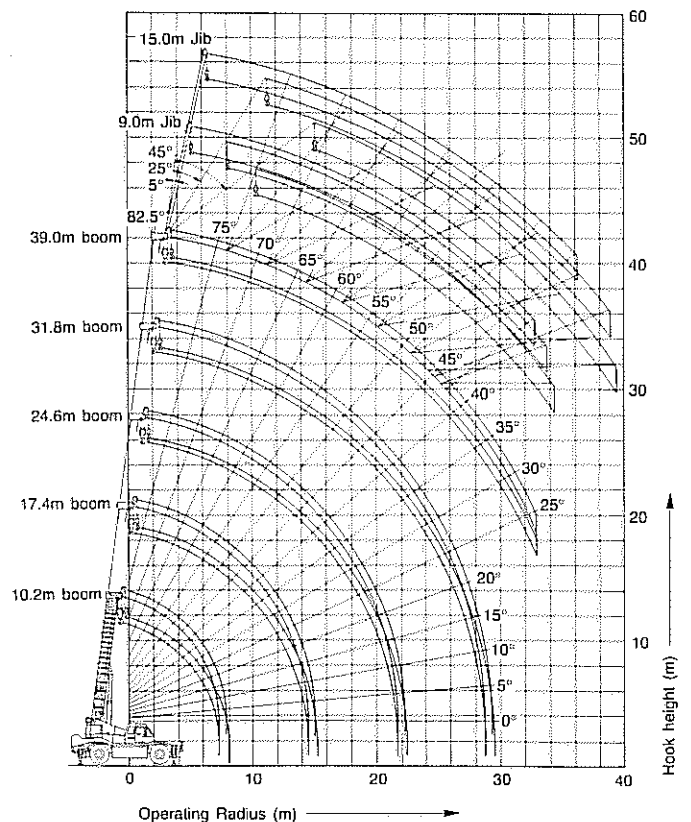
Optional Sky Tilt jib Lifting Capacities with Outriggers

Main boom angle	With outriggers in 7.2m position—360° working area					
	9.0 m jib			15.0 m jib		
	Offset angle			Offset angle		
	5°	25°	45°	5°	25°	45°
82	3.50	2.40	1.60	2.40	1.25	0.80
80	3.50	2.40	1.60	2.40	1.25	0.80
78	3.50	2.40	1.60	2.40	1.25	0.80
77	3.50	2.40	1.60	2.32	1.25	0.80
76	3.50	2.40	1.60	2.23	1.22	0.80
75	3.50	2.31	1.60	2.15	1.20	0.80
74	3.32	2.23	1.58	2.06	1.18	0.79
72	3.00	2.08	1.54	1.91	1.14	0.79
70	2.75	1.95	1.50	1.76	1.10	0.78
68	2.52	1.84	1.45	1.63	1.06	0.77
66	2.30	1.72	1.39	1.51	1.02	0.76
64	2.12	1.60	1.35	1.41	0.99	0.75
62	1.96	1.52	1.31	1.33	0.95	0.74
60	1.85	1.45	1.26	1.25	0.92	0.73
58	1.74	1.37	1.22	1.19	0.88	0.72
57	1.70	1.34	1.20	1.16	0.86	0.72
56	1.62	1.30	1.17	1.14	0.84	0.71
55	1.49	1.27	1.14	1.11	0.82	0.71
54	1.35	1.21	1.12	1.06	0.80	0.70
53	1.22	1.10	1.02	0.95	0.78	0.70
52	1.10	1.00	0.94	0.84	0.72	0.69
51	0.99	0.90	0.85	0.74	0.64	0.62
50	0.88	0.80	0.76	0.66	0.57	0.54
48	0.67	0.62	0.59	0.48	0.43	0.40
47	0.58	0.52	0.50	0.41	0.37	0.34
46	0.50	0.44	0.42	0.35	0.32	
45	0.42	0.36	0.34			
44	0.34					
Min. angle	44°	45°	45°	46°	46°	47°

Main boom angle	With outriggers in 5.4m position—over the side					
	9.0 m jib			15.0 m jib		
	Offset angle			Offset angle		
	5°	25°	45°	5°	25°	45°
82	3.50	2.40	1.60	2.40	1.25	0.80
80	3.50	2.40	1.60	2.40	1.25	0.80
78	3.50	2.40	1.60	2.40	1.25	0.80
77	3.50	2.40	1.60	2.32	1.25	0.80
76	3.50	2.40	1.60	2.23	1.22	0.80
75	3.50	2.31	1.60	2.15	1.20	0.80
74	3.32	2.23	1.58	2.06	1.18	0.79
72	3.00	2.08	1.54	1.91	1.14	0.79
70	2.75	1.95	1.50	1.76	1.10	0.78
68	2.52	1.84	1.45	1.63	1.06	0.77
67	2.26	1.78	1.42	1.57	1.04	0.76
66	2.03	1.72	1.39	1.51	1.02	0.76
65	1.80	1.66	1.37	1.46	1.01	0.75
64	1.60	1.47	1.35	1.31	0.99	0.75
63	1.41	1.29	1.19	1.13	0.89	0.74
62	1.24	1.12	1.03	0.98	0.77	0.68
60	0.91	0.81	0.75	0.72	0.56	0.48
58	0.64	0.52	0.49	0.47	0.34	0.30
57	0.50	0.40	0.38	0.36		
56	0.40					
Min. angle	56°	57°	57°	57°	58°	58°

Main boom angle	With outriggers in 4.0m position—over the side					
	9.0 m jib			15.0 m jib		
	Offset angle			Offset angle		
	5°	25°	45°	5°	25°	45°
82	3.50	2.40	1.60	2.40	1.25	0.80
80	3.50	2.40	1.60	2.40	1.25	0.80
78	3.50	2.40	1.60	2.40	1.25	0.80
77	3.50	2.40	1.60	2.32	1.25	0.80
76	3.50	2.40	1.60	2.23	1.22	0.80
75	3.50	2.31	1.60	2.15	1.20	0.80
74	2.84	2.23	1.58	2.06	1.18	0.79
73	2.40	1.92	1.56	1.98	1.16	0.79
72	2.02	1.63	1.36	1.76	1.14	0.79
71	1.70	1.38	1.16	1.46	1.12	0.78
70	1.42	1.16	0.97	1.20	0.95	0.78
69	1.17	0.96	0.80	0.96	0.78	0.64
68	0.94	0.76	0.65	0.75	0.61	0.50
67	0.74	0.59	0.50	0.57	0.45	0.40
66	0.56	0.42	0.36	0.40	0.31	
65	0.40					
Min. angle	65°	66°	66°	66°	66°	67°

Working Ranges



Ratings inside the bold lines are governed by the strength of the boom or other structural components.