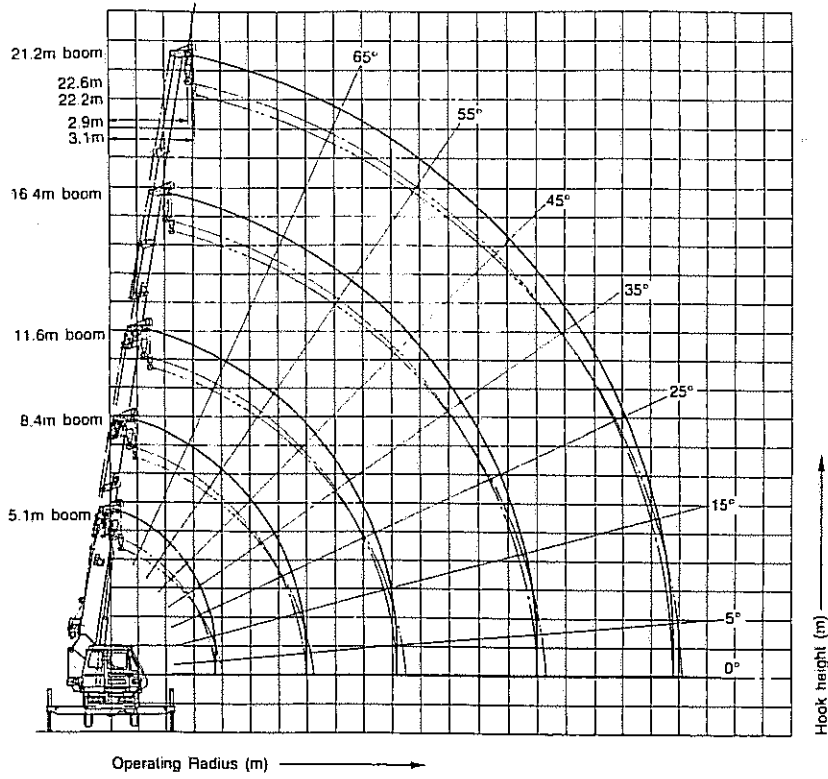


Working Ranges



With outrigger in 4.4m position — 360° working area

(METRICTON)

Operating radius in meters	Boom length in meters				
	5.1	8.4	11.6	16.4	21.2
1.0	7.00	4.90			
1.5	7.00	4.90	4.90		
2.0	7.00	4.90	4.90		
2.5	7.00	4.90	4.90	3.90	
3.0	6.10	4.90	4.90	3.90	2.00
3.5	5.30	4.90	4.90	3.90	2.00
4.0	4.90 (3.7m)	4.50	4.50	3.60	2.00
4.5		3.85	3.87	3.30	2.00
5.0		3.33	3.37	3.05	2.00
5.5		2.95	2.97	2.82	1.85
6.0		2.62	2.65	2.56	1.70
7.0		2.15 (6.9m)	2.14	2.15	1.50
8.0			1.70	1.84	1.40
9.0			1.40	1.60	1.23
10.0			1.20	1.40	1.09
11.0			1.16 (10.2m)	1.20	0.98
12.0				1.02	0.89
13.0				0.85	0.82
14.0				0.69	0.75
15.0				0.55	0.69
16.0					0.59
17.0					0.51
18.0					0.43
19.0					0.36
20.0					0.35 (19.6m)
21.0					
Min. angle	—	—	—	—	—

Dimensions **RK70**

Unit: mm

