

DIMENSIONS

A - Overall length	5.900 mm	H - Width of cab	920 mm
B - Overall length to front tyres	3.980 mm	L - Overall width (over tyres)	2.310 mm
C - Wheelbase	2.900 mm	M - Overall height	2.450 mm
D - Ground clearance	390 mm	Outside turn radius	4.000 mm
F - Width over fully extended stabilizers.....	2.600 mm	Fork tilt	134°
G - Track	1.910 mm	Total unladen weight	10.600 kg

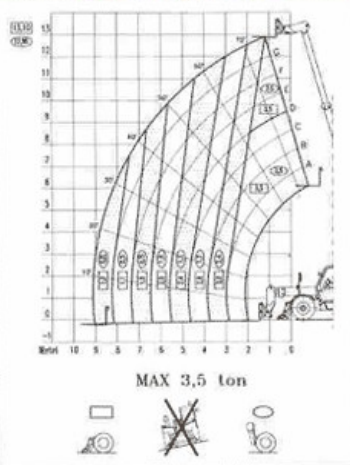
PERFORMANCE ON STABILIZERS

Maximum capacity	3.500 kg
Maximum capacity at full height	3.500 kg
Capacity at maximum reach	1.000 kg
Maximum lifting height	13,10 m
Maximum front reach	9,10 m
Reach at full height	1,10 m
Breakout force	5.700 daN
Pulling force	7.300 daN
Speed	27 km/h
Gradeability	40 %

3 STEERING MODES



CAPACITY DIAGRAM



The above mentioned specifications refer to the machine equipped with tyres of 20".